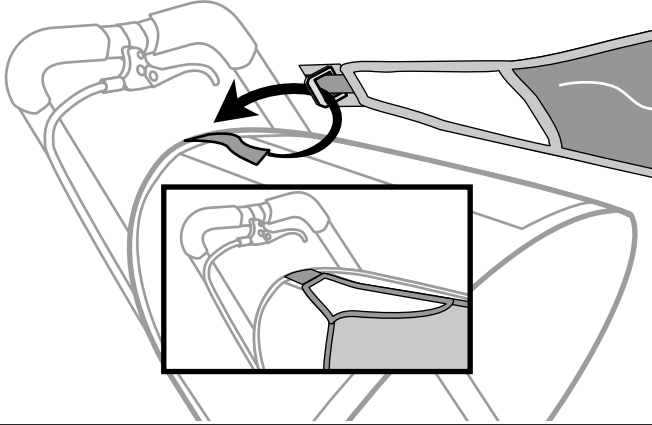


Designed for **YAKIMA beetle** Jogging Stroller

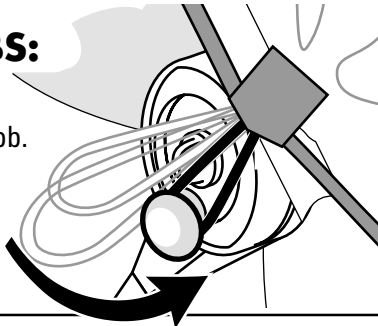
## 1 CANOPY TOP:

- Push strap through weather shield buckle.
- Press strap together.



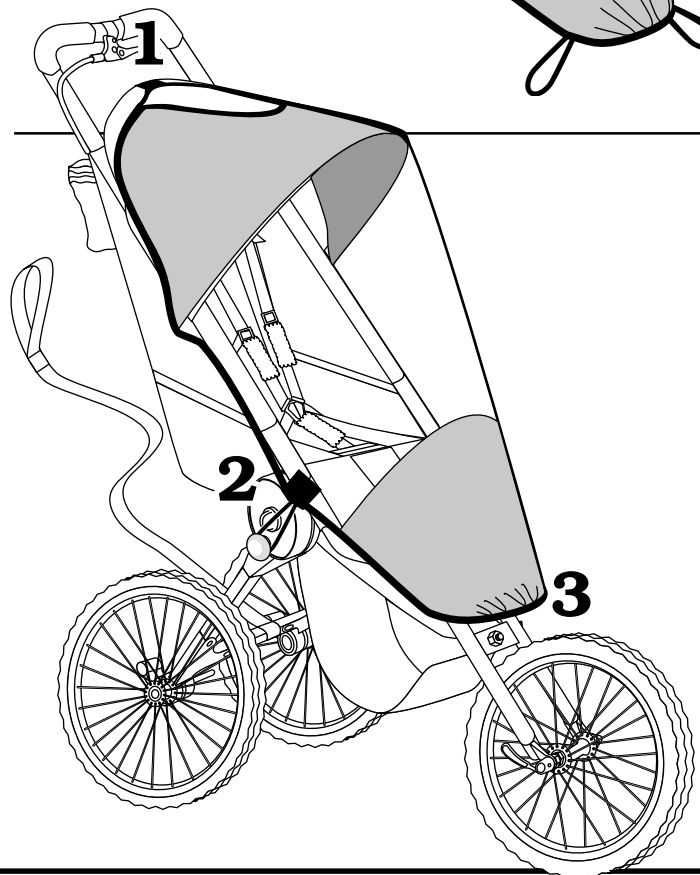
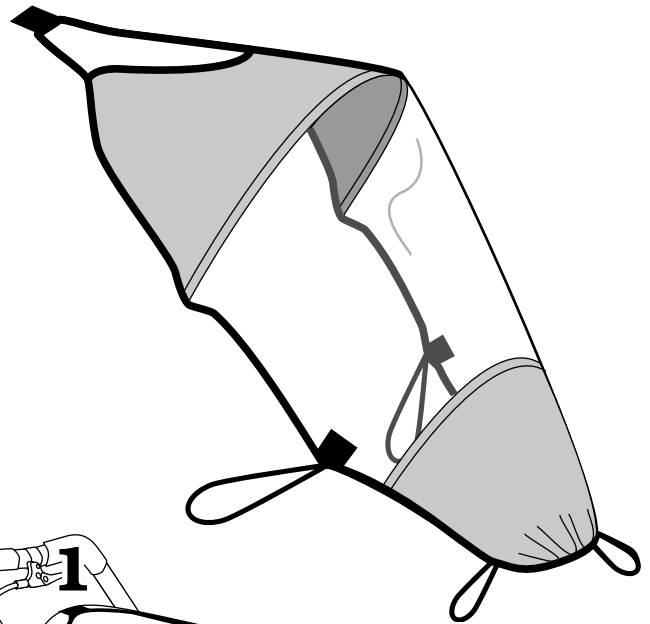
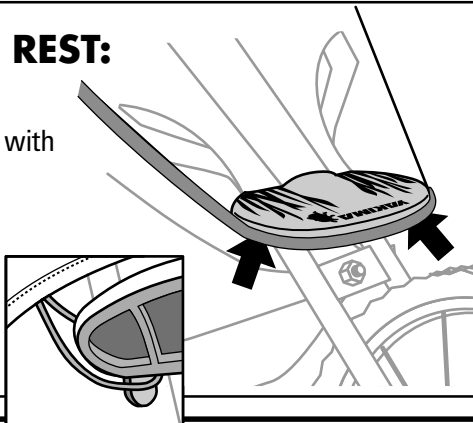
## 2 RED KNOBS:

- Pull loop over the knob.
- Attach shield to both red knobs.



## 3 FOOT REST:

- Cover foot rest with shield fabric.
- Pull loops onto small tabs behind foot rest.



### WARNING

*Before moving with child in stroller, check the four attachment points. The shield must be securely attached to stroller before moving.*

### CARE OF WEATHER SHIELD:

HAND WASH in cold water with mild detergent.  
Rinse thoroughly, DRIP DRY ONLY.  
Wipe with a clean, soft, dry cloth if desired.